

Capsule Coffee Machine Instruction Manual



CE CB SAA RoHS

! Please read this instruction Manual and the safety instructions before operating the appliance!

⚠ Notice

SOS In the event of an emergency: immediately remove plug from power socket.

The manufacturer declines any responsibility and the guarantee is rendered invalid in the event of any form of commercial use, misuse, or failure to comply with these instructions. Unplug the power cord from the wall socket if you will not be using the machine for a long period of time.

Check that the voltage quoted on the rating plate is the same as your voltage. Connect the appliance to earthed power sockets only. Any improper connection voids warranty.

Place on a flat, stable and heat-resistant work surface away from water splashes and any heat sources.

Do not use the machine if it is not in perfect working condition or if there is evidence of damage. In such cases inform the seller.

- Do not insert fingers into capsule compartment and capsule shaft, as there is a danger of injury.
- Do not use the appliance without the drip tray and drip grid.
- Keep the appliance/cord out of reach of children.
- Do not fill the water tank with hot water.
- Do not immerse the machine in liquids. Risk of electric shock.
- Do not place the power cord near hot parts or sharp objects, etc.
- Do not hang power cable (risk of tripping)
- Do not touch the power cable wet-handed.
- Do not plug off by pulling the power cable.

When supervised by adults and fully aware of relevant hazards, children of eight years old and above may use the machine in a safe manner. Children under eight years of age are forbidden to clean and maintain the machine. Keep the machine and power cable away from children less than 8 years old.

Do not open the appliance or insert anything into the openings. All actions other than normal use, cleaning and care must be performed by the seller.

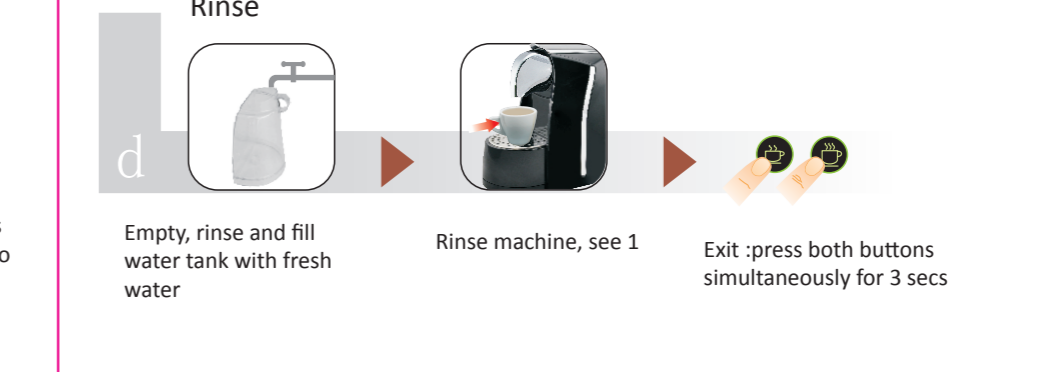
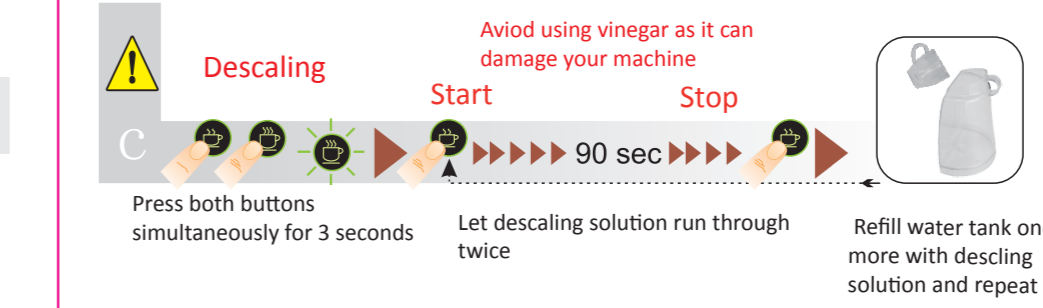
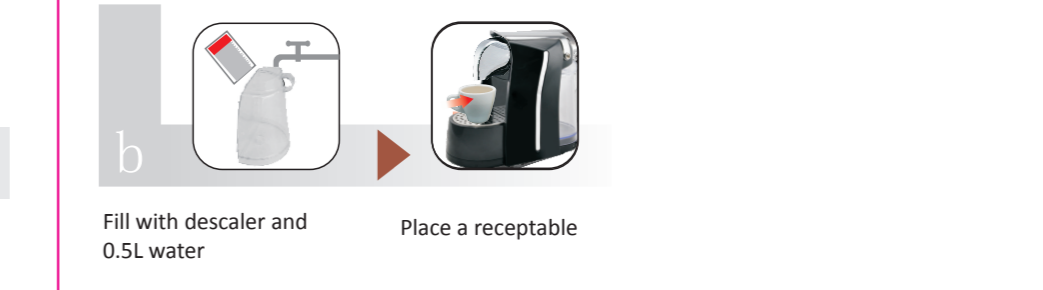
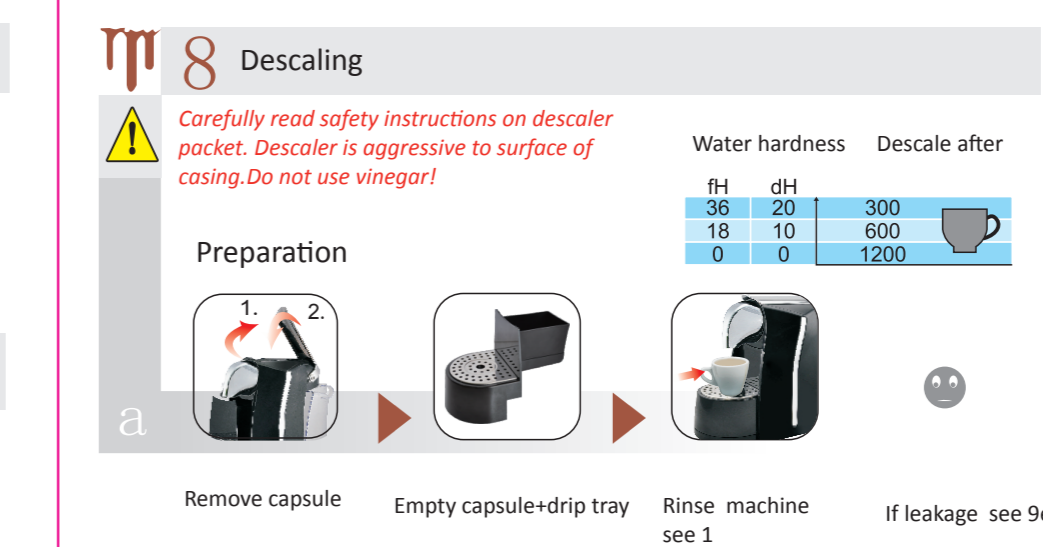
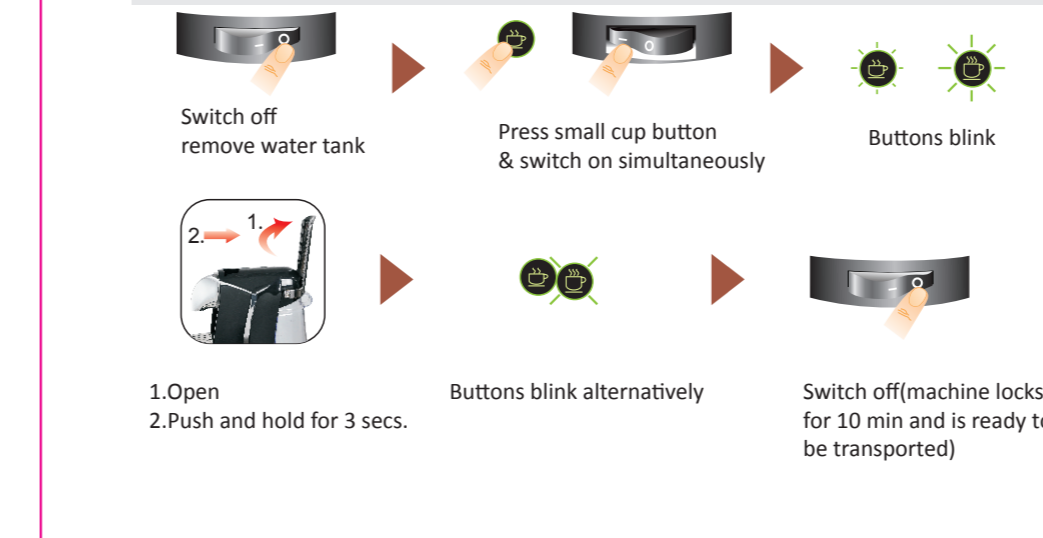
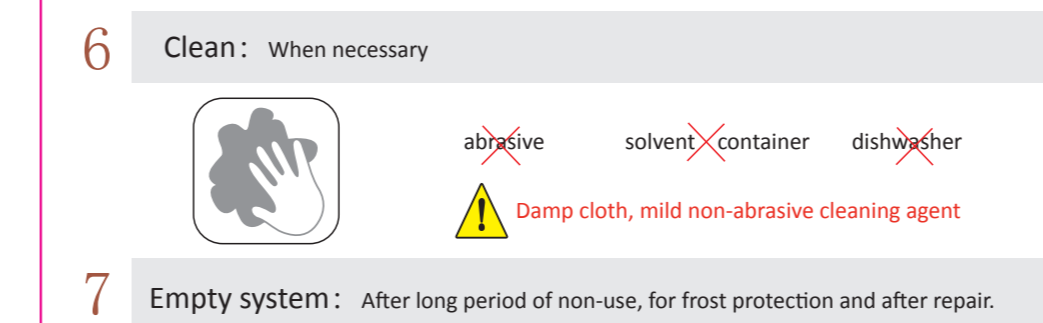
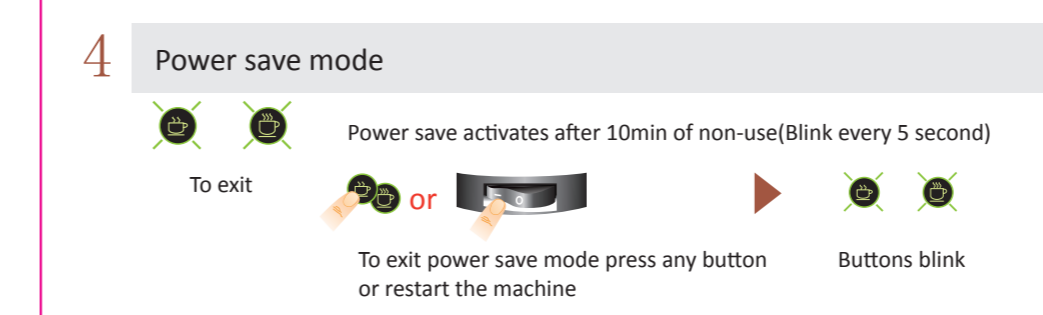
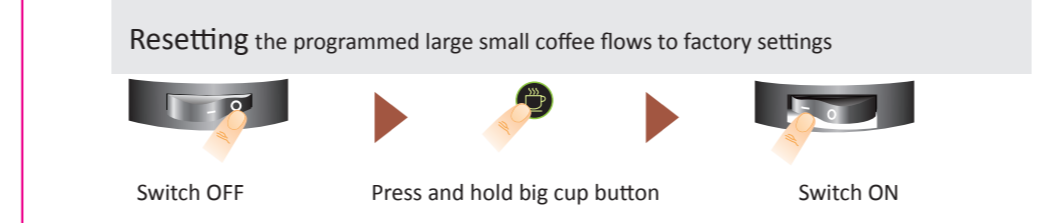
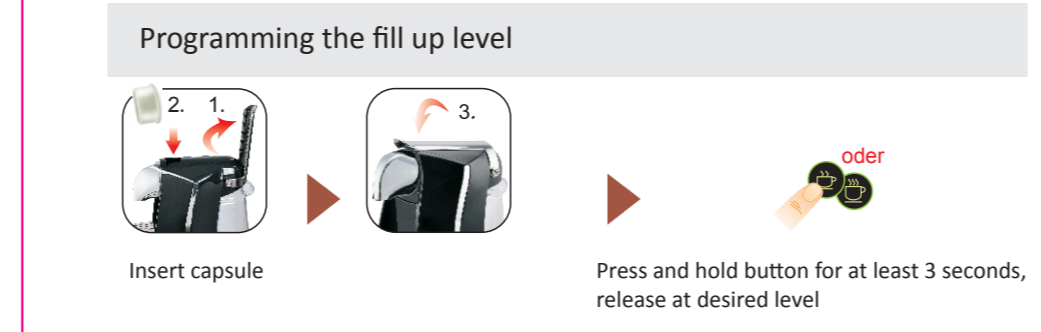
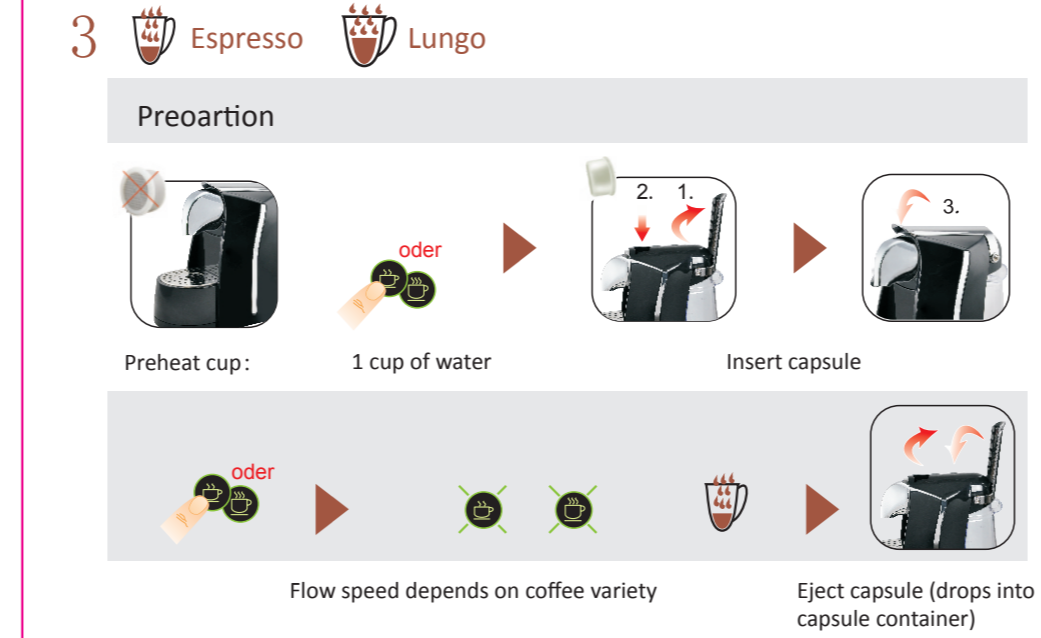
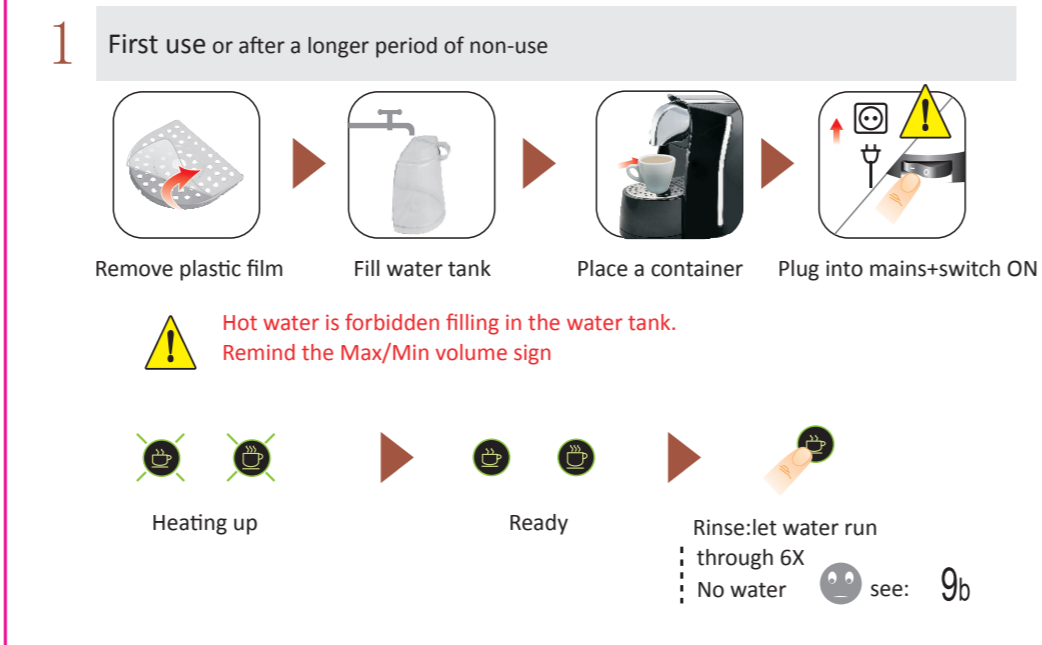
Before cleaning, unplug the appliance and let it cool down. Never clean with wet cloth or immerse plug, cord or appliance in any liquid. Make sure there is enough space around the machine for ventilation and also enough space both in front and behind for maintenance.

Packaging materials (plastic bags etc.) are potential hazards. Keep them out of reach of children.

This marking indicates that this product should not be disposed with other household wastes throughout the EU. To prevent possible harm to the environment or human health from uncontrolled waste disposal, recycle it responsibly to promote the sustainable reuse of material resources. To return your used device, please use the return and collection systems or contact the retailer where the product was purchased. They can take this product for environmental safety.



- Flashing slow (1* time/sec): preheating, coffee, rinse
- Flashing very slow (5* sec/time): Power save mode
- Bright: ready
- Flashing (2* time/sec): emptying the system
- Flashing (3* time/sec): boiler too hot, switch OFF to rest



9 Troubleshooting

a No light
 ↳ The machine has switched off automatically; press ON/OFF buttons
 ↳ Check the mains: plug, voltage, fuse

b No coffee, No water
 ↳ Check the water tank if empty, full with potable water. Descal it if necessary.
 ↳ Lift the lever. Press one button and wait until water comes out.

c Coffee is not hot enough
 ↳ Preheat cup. Descal the machine if necessary.

d The lever can not be closed completely
 ↳ Empty the capsule container /check the there is not capsule blocked inside the machine.

e Leakage or unusual coffee flow
 ↳ Check that the water tank is in position

f Lights flash irregularly
 ↳ Check the water tank if empty, full with potable water.
 ↳ Replace a new capsule
 ↳ Exit descaling procedure (see paragraph on descaling)
 ↳ Power save activates after 10min of non-use

g Water comes out No coffee
 ↳ Replace a new capsule

Specification

| | | | | |
|----|---------------------------------|---|-------------|--------------------------|
| ~ | 220-240 V~, 50/60Hz, 1250-1450W | p | max. 15 bar | <input type="checkbox"/> |
| | | | max. 20 bar | <input type="checkbox"/> |
| | 1L | | 5°C ~ 45°C | |
| kg | ~3.1 kg | | 16.2cm | 26.0cm |
| | | | 30.5cm | |